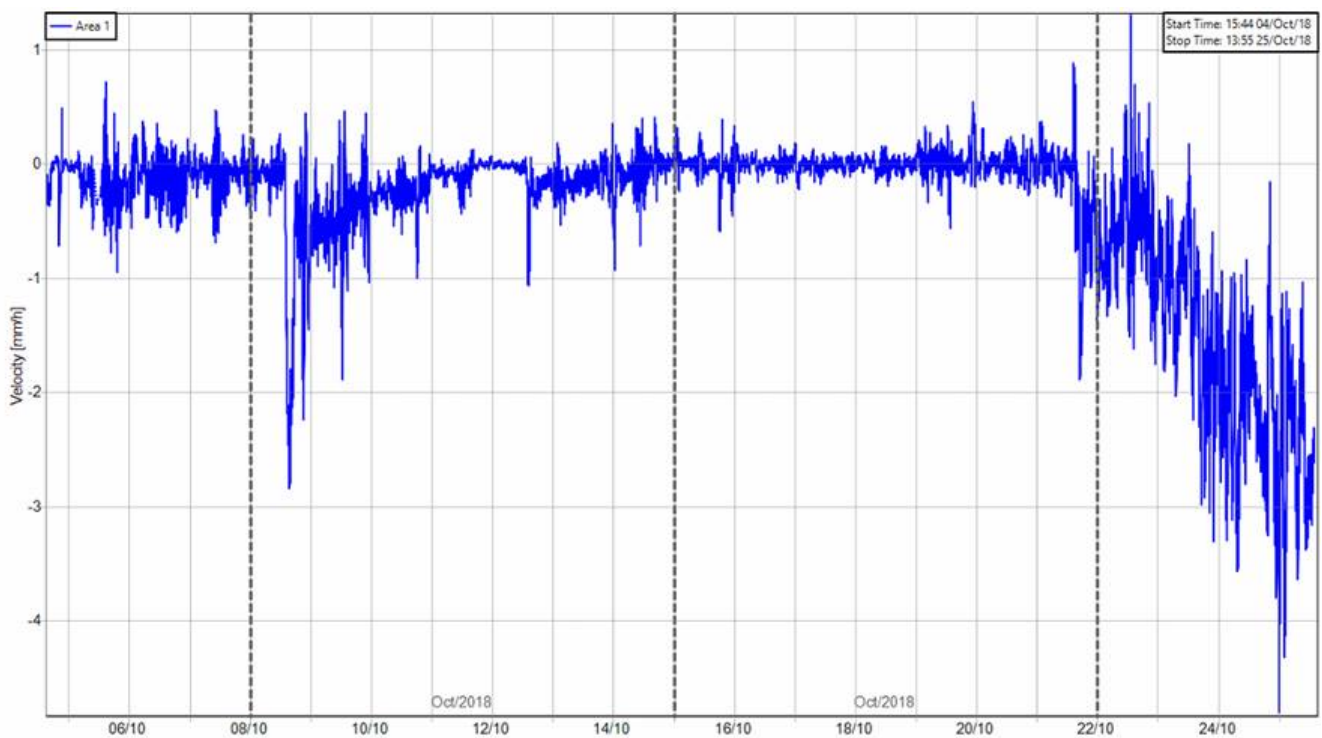
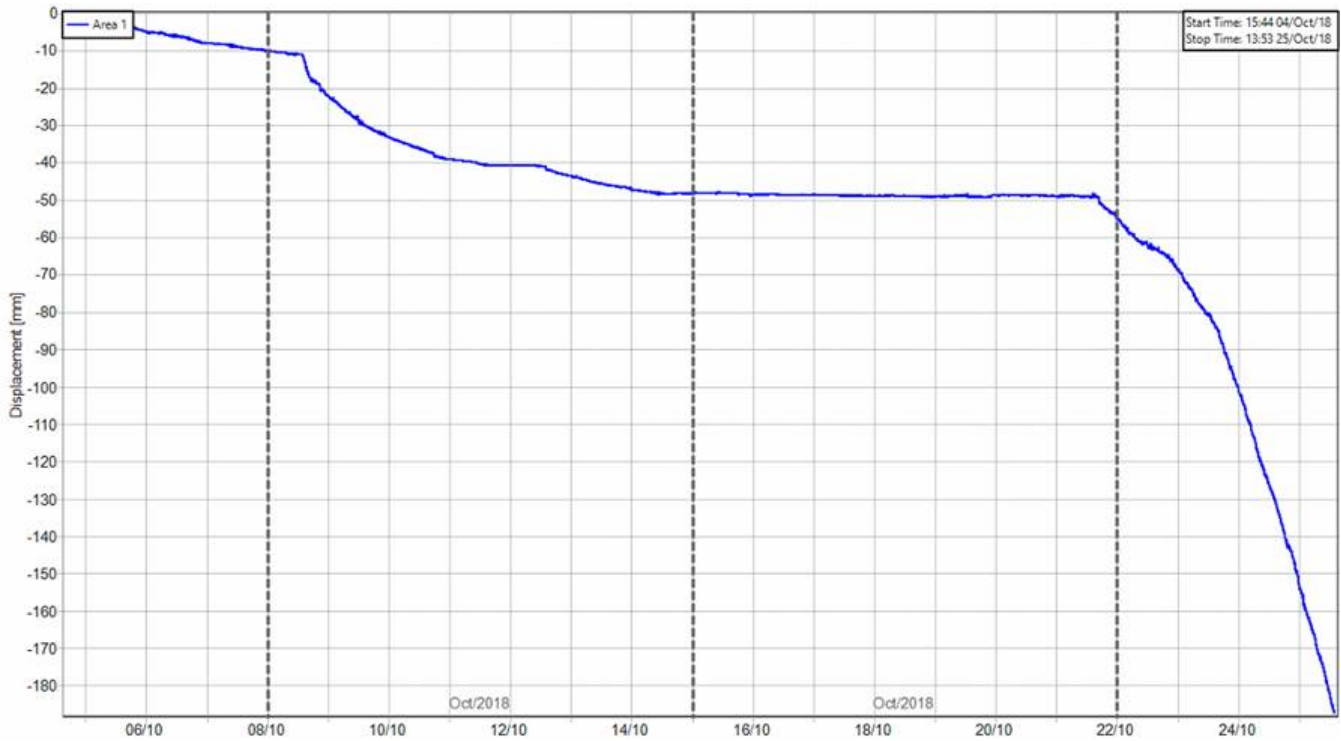


SAMPLE RADAR DATA INTERPRETATION

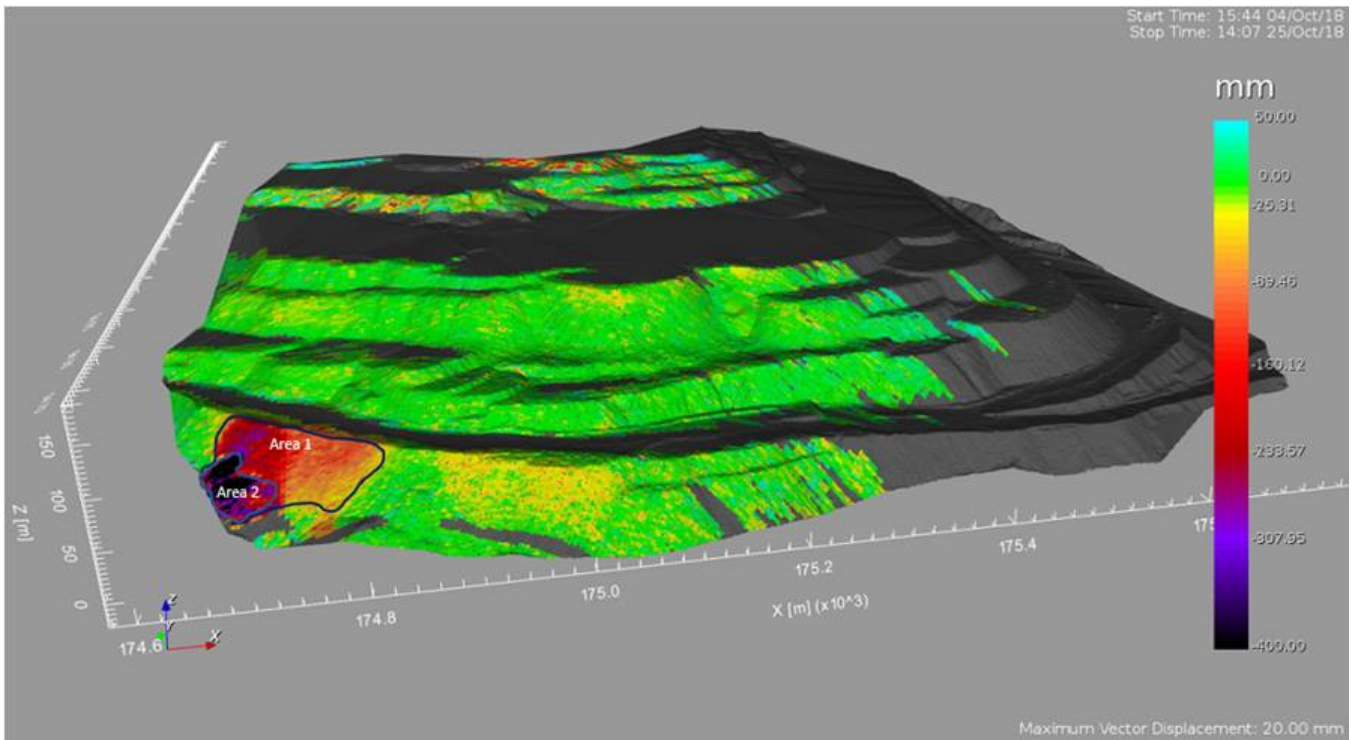
IBIS-ROVER MINE SLOPE MONITORING AND EARLY WARNING SYSTEM @ ECL Sonapur Bazari

The main moving area above the dragline had a sudden acceleration on October 21. This is the evolution of the displacement and velocity time series from the first beginning of the monitoring. This a clear progressive trend, different from the first one we reported which was actually a regressive one (the one started on October 8)

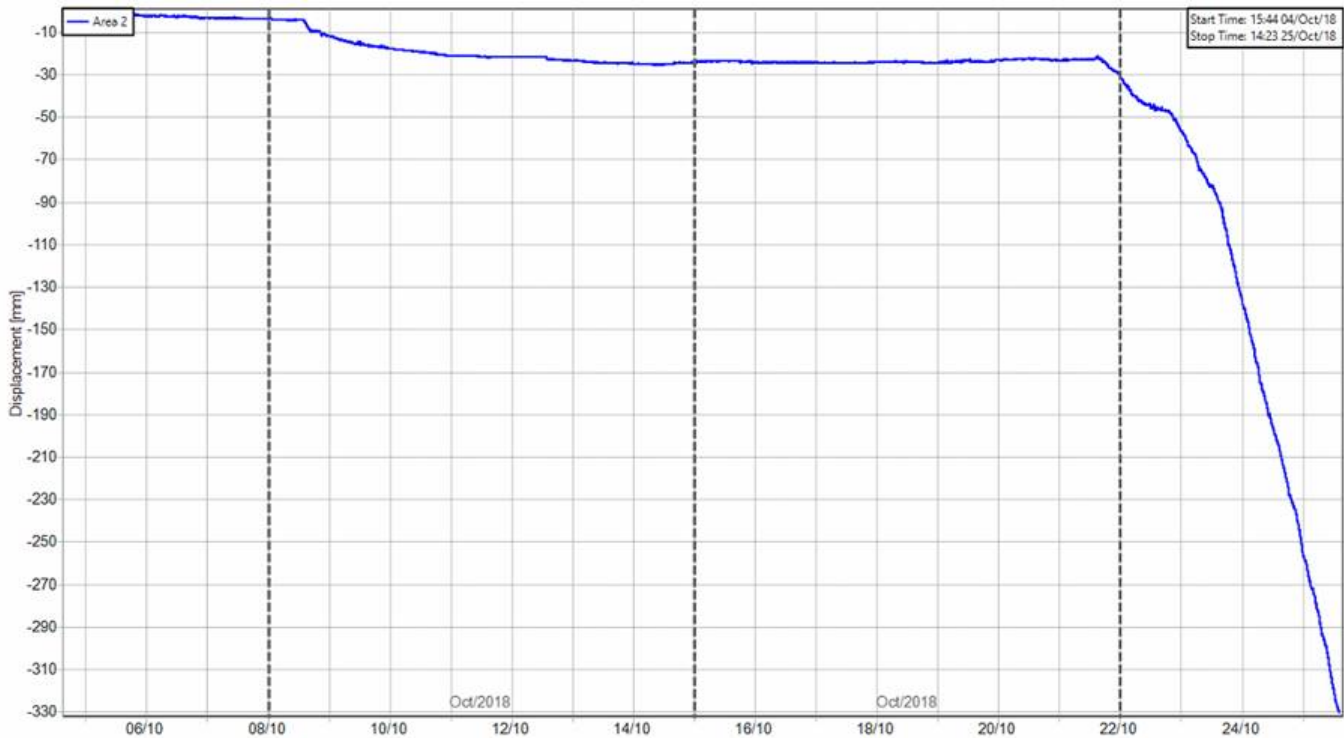


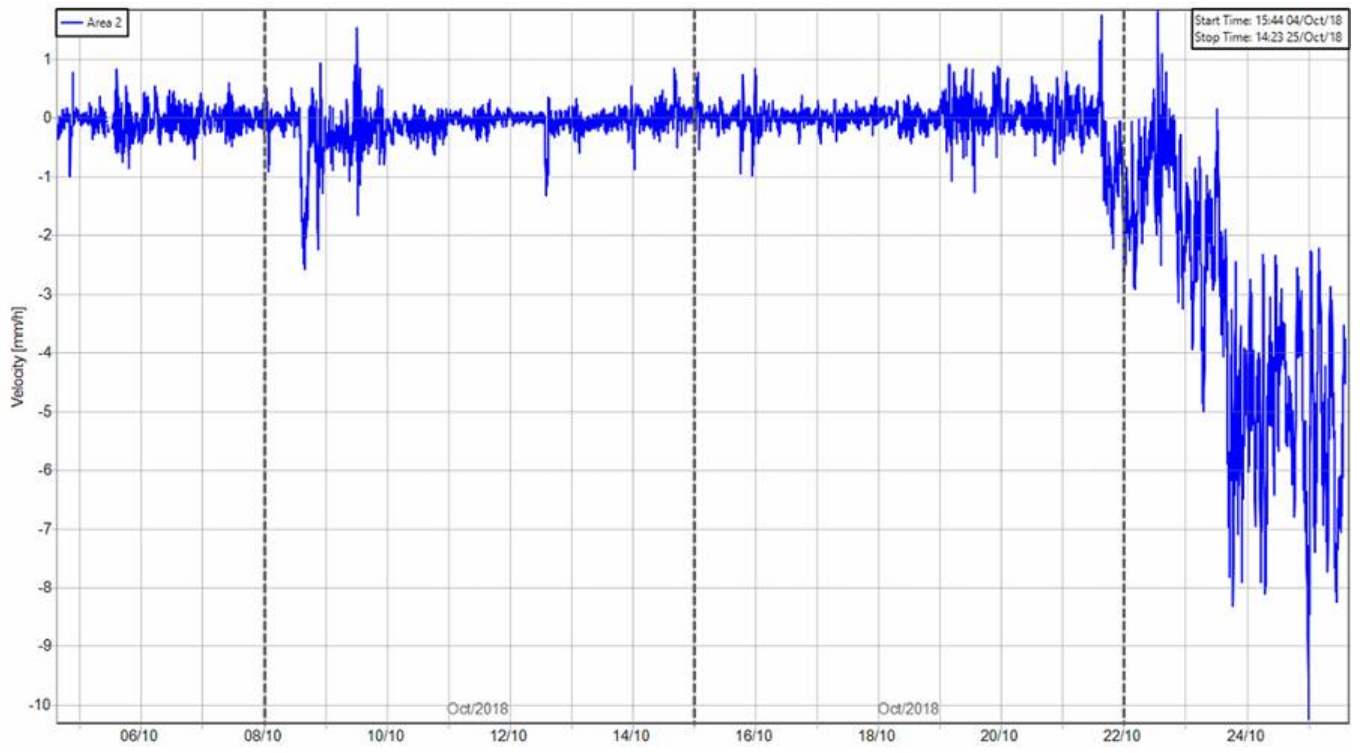
Of course these are time series of the whole area (Area 1), but some sector are moving much faster as you can see from the cumulative displacement map below:

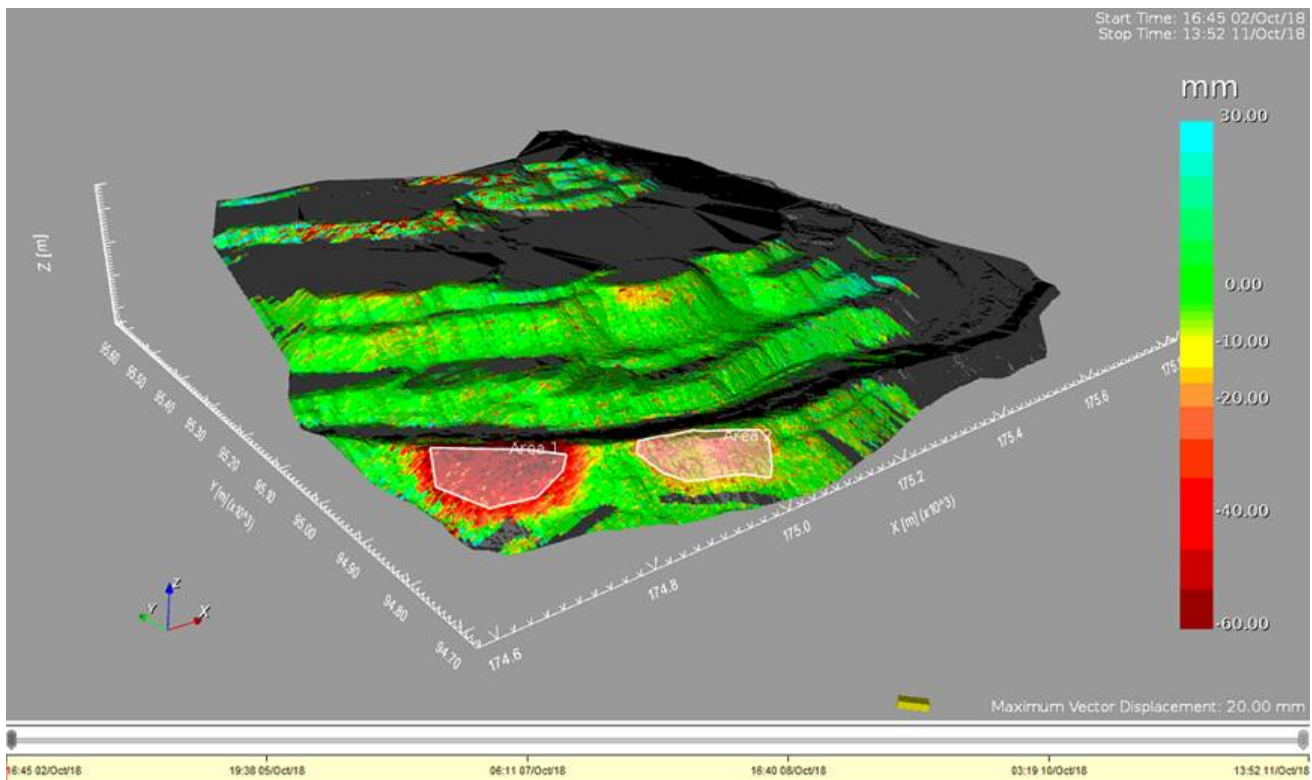
the bottom left sector of the area (Area 2) moved more than 400mm from the beginning of the monitoring and most of this movement occurred after October 21. Dragline is working exactly below that sector I remember.



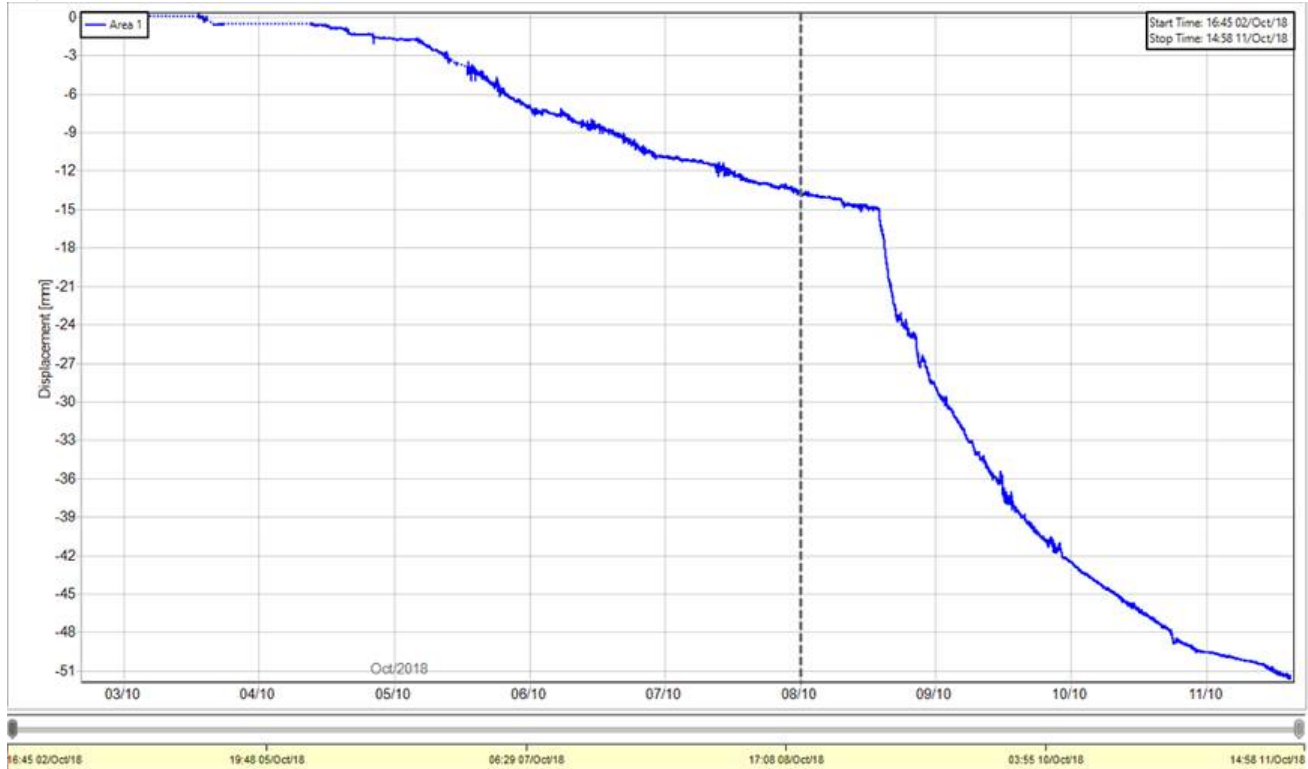
Here is displacement and velocity time series for area 2. Velocity is now more than 8mm/h but constant at moment. Of course additional accelerations might occur in this condition.



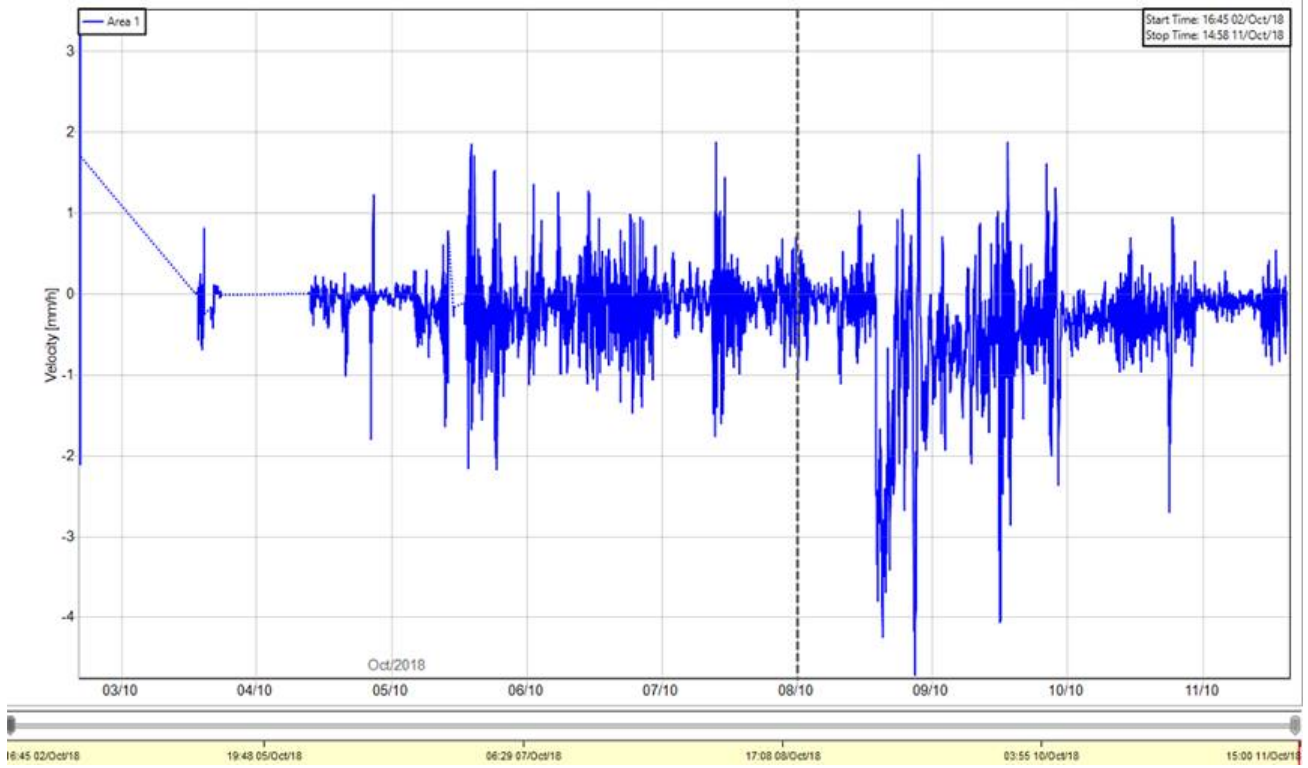




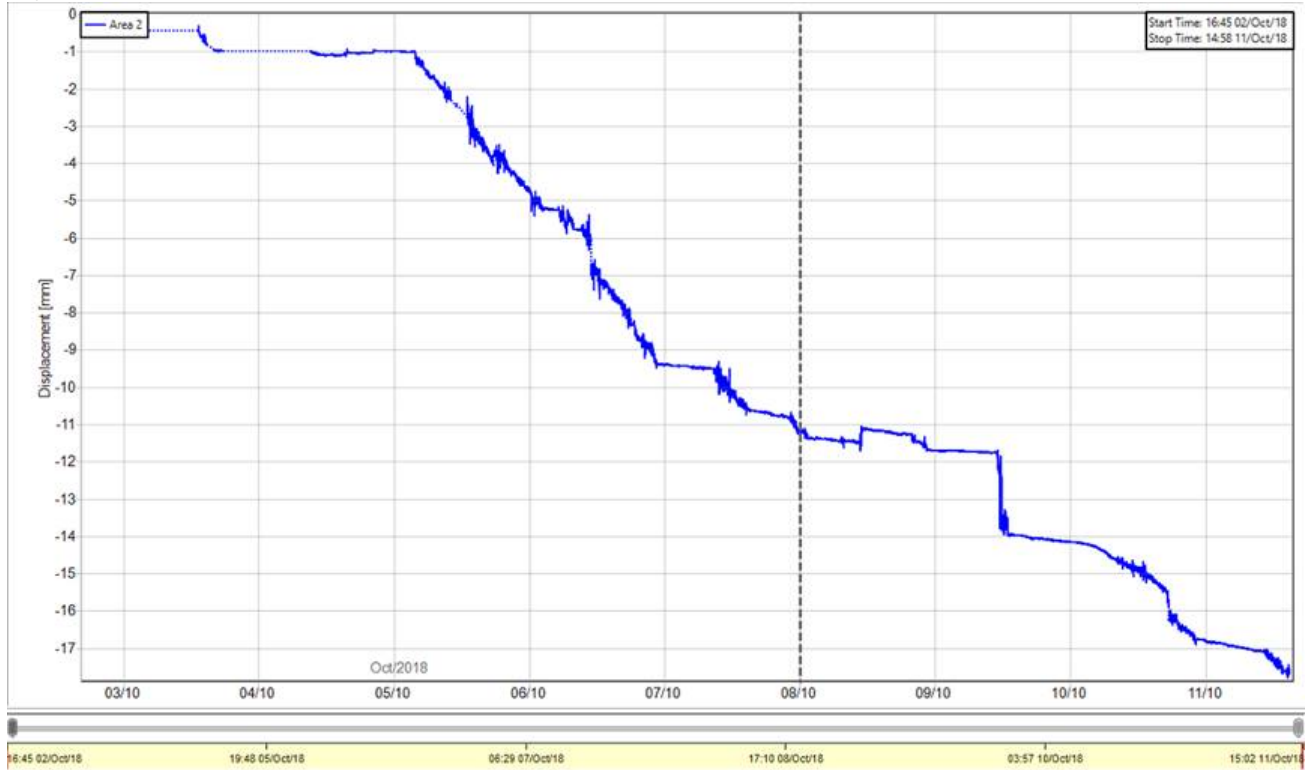
Displacement time series area 1



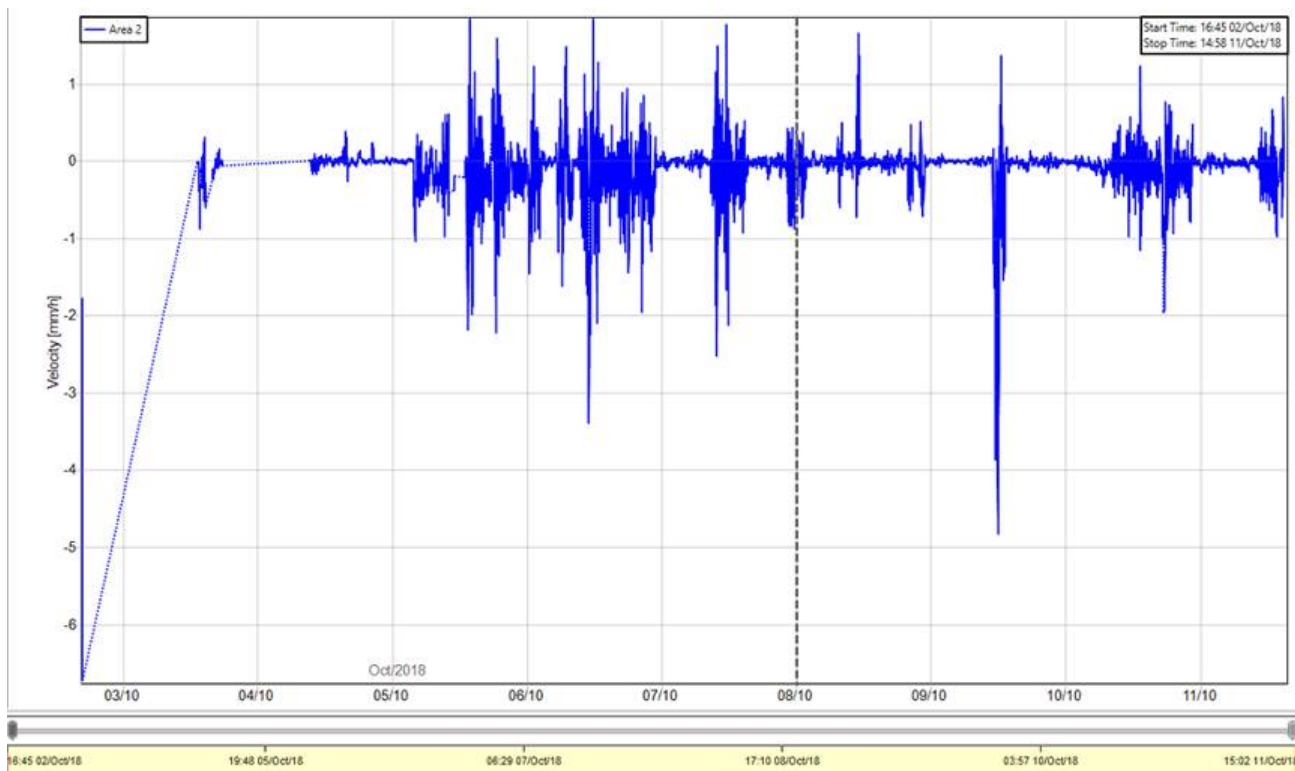
Velocity time series area 1 – 20 min average



Displacement time series area 2



Velocity time series area 2 – 20 min average



16:45 02/Oct/18

19:48 05/Oct/18

06:29 07/Oct/18

17:10 08/Oct/18

03:57 10/Oct/18

15:02 11/Oct/18